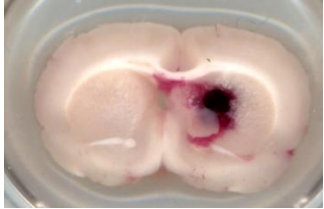
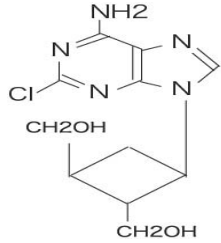


# 脳出血に対するCOA-Clの治療効果

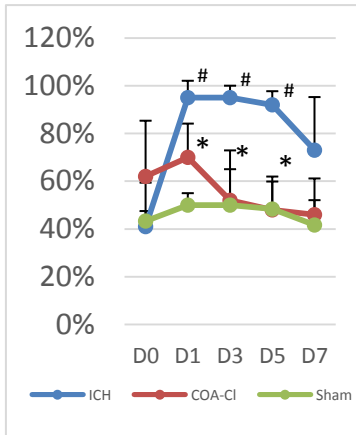
脳出血モデル  
(自家血を線条体へ注入)



脳出血後COA-Cl (30μ g/kg)脳室内投与

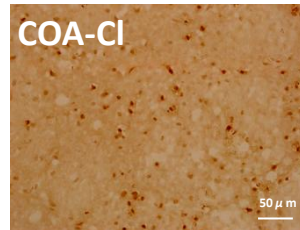
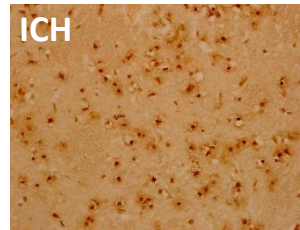


## Forelimb placing test



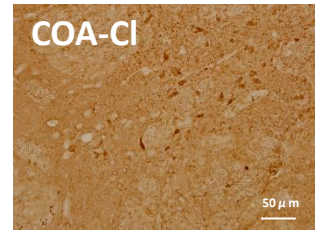
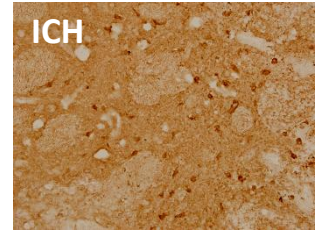
## Anti-apoptosis

TUNEL Assay



## Anti-oxidation

8-OHdG immunostaining



## 脳浮腫

